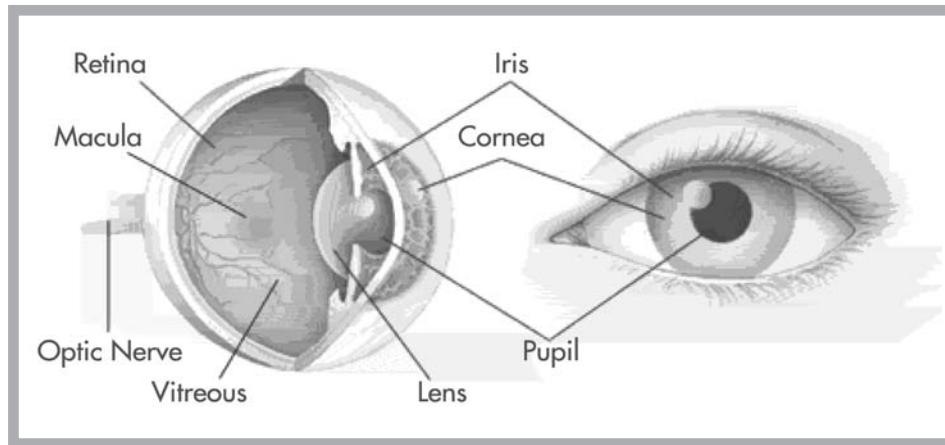


Anatomy



Anatomy of the Eye

Parts of the Eye

- **Cornea** – A clear, transparent structure at the front of the globe that serves as the primary refractive surface of the eye. The cornea transmits and focuses light into the eye.
- **Iris** – The colored part of the eye. The iris helps regulate the amount of light that enters the eye.
- **Pupil** – The dark center in the middle of the eye. It is an opening in the iris that allows light to enter the eye and which changes size depending on the amount of light that is available.
- **Lens** – The transparent structure inside the eye that focuses light rays onto the retina.
- **Retina** – The nerve layer that lines the back of the eye. The retina senses light and creates impulses that are sent through the optic nerve to the brain.
- **Macula** – An area of the retina, approximately 5.5 mm in diameter, with the fovea at its center. The macula is rich in cones and receptors and is free of major blood vessels.
- **Optic nerve** – The nerve that connects the eye to the brain. It carries the impulses formed by the retina to the brain, which interprets them as images.
- **Vitreous humor** – The jelly-like structure of the globe that fills the largest space of the eye, occupying two-thirds of its volume.